



In This Issue

| | |
|---------------------------------|---|
| Letter from the President | 2 |
| Member's Page..... | 3 |
| Emergency Preparedness..... | 3 |
| Traffic Report..... | 4 |
| Community Notes..... | 5 |
| News and Notices..... | 6 |
| At Your Service | 7 |
| Membership Application | 8 |



Save The Date! 2004 Beverly Glen Annual Holiday Party

Everyone is welcome!

When: Sunday

December 19, 2004

5 p.m. - 8 p.m.

Where: Les River
Community Center (LRCC)

We're looking for volunteers (for food, planning, setup and clean-up.) If you would like to volunteer, please contact a board member or email board@beverlyglen.org.

The Residents Of Beverly Glen Annual Meeting 2004

On October 10th Glen residents gathered at the LRCC to discuss important Glen issues, elect new board members, hear from local officials and mingle over wine and cheese.



President Dan Buben opens the meeting.

Captain Jeff Mills of Fire Station 71 talks to Glen residents about fire issues and answers questions from the audience.



Officer Mike Davis of West Traffic Division of LAPD explains the issues of using radar in catching speeders on Beverly Glen Blvd.

Fortuna Ipppoiti of Councilman Jack Weiss's office discusses the issues of getting the side streets paved in the Glen. Many of the streets are really bad but there is little city money for paving.



Letter from the President

As President of The Residents of Beverly Glen, Inc. my goal is to live up to our purpose that was formed for our community in the 1950's. Simply stated, our bylaws read: A.) To improve the quality of life in the Beverly Glen Community. B.) To enhance the safety, appearance and value of homes and home sites in the community. C.) To provide the community with an organized means for group discussion, recreation and sociability. D.) To control the development of land within the community and in neighboring communities that affect Beverly Glen. E.) To control and reduce traffic in the Beverly Glen community. F.) To give all residents of the community, owners and renters alike, a sense of belonging and continuity by making them aware of the history of Beverly Glen, its present role in the larger Los Angeles community, and the problems and possibilities for its future development. G.) To take such community actions as needed for the accomplishment of all above purposes. I have very large shoes to fill. I know our 2004-2005 board wants and plans to live up to our purpose. Our community needs your help. In 2004 our community spent over \$2000.00 more dollars than we brought in. If you would like to see how your board spent money in 2004 go to www.beverlyglen.org. I want every resident to take pride in their community, take a moment and write out a check for membership. Your membership is now due.

I want to thank Tamar Cooper a resident for many years, that has always paid on time or early because she knows her membership counts and helps the community. Thank You!!! Please take a moment and cut the membership form on the back of this Glenite and mail your check today we do not ask for much. Some residents feel that the time to pay your membership is at the fair that is incorrect; we are just trying to collect for membership not yet collected. Your board wants to live up to its purpose. In addition, if you want to make a difference please volunteer for one of the committees that interest you or come to any of our board meetings. As I have stated in previous Glenites we need your help. Your suggestions and solutions to problems are always welcome.

Our concerns and issues are just as important today as yesterday. I am very thankful for many of the residents that volunteer time over the years. As a community we need new eyes and ears that have great ideas and we must continue to listen to our founding members and past board members. I have to thank the following board members that left the board this year for their service to The Glen and surrounding community. They are Karl Medina, Kathy Lehmer, Sally Anne Rosenberg, Elaine Vukadinovich, Susan Lerner and Brian Mitchell.

I want to thank Greg Heimer for spending many hours with residents to help bring the following new residents to our board this year. Our new board members are Steve Bluestein, Karina Combs, Trein Schiffelbian, Rob Sinclair, Julie Patel and Diane Fisher.

The following board members are back again this year; Roger Marshutz, Pam Cooke, Stefan Pollack, Antoinette Bower, Hadley and Peter Arnold, Shahab Rabbani, Robert Ringler and Dan Buben. These concerned residents want to make a difference for our community.

This year I brought together three other organizations to your board so we can understand and listen to the concerns and goals of The Beverly Glen Playgroup, Les Rivers Community Center, and our Neighbor Council.

At our annual meeting we had the eyes and ears of Jack Weiss, Fortuna Ippollitti and our local L.A.P.D. and L.A.F.D. These city organizations are at our disposal to help our community. Thank you to Richard Renaldo for his generous act of serving wine and cheese for everyone that attended our annual meeting. I want to make sure we stay focused on getting things done this year and continue to communicate community needs like street repaving. Dominique Shelton told me she wants to stay involved on this project and I want to thank her for her commitment to our community. Our next scheduled social gathering for the community is our annual holiday party, on Sunday Dec 19th from 5-8pm at our Les River Community Center.

See you in the Glen!!!

Dan Buben

The Glenite

Founded 1953

Published by The Residents of Beverly Glen, Inc.

10409 Scenario Lane • Los Angeles, CA 90077

www.beverlyglen.org

RBG Board of Directors Roster and Contact Info

| | |
|---|----------------------------|
| President: | |
| Dan Buben | (310) 474-4075 |
| Membership: | |
| Diane Fisher | 474-1168 |
| Treasurer: | |
| Trein Schiffelbian | triguy3@aol.com |
| Secretary/ Web Site: | |
| Karina Combs | kkombs@earthlink.net |
| Traffic: | |
| Peter & Hadley Arnold | 234-8805 |
| Zoning & Development: | |
| Shahab Rabbani | 234-8400 |
| Emergency Preparedness: | |
| Antoinette Bower | 474-2386 |
| Publicity/Glenite: | |
| Stefan Pollack | 556-4443 |
| Social Events: | |
| Steve Bluestein | 475-4763 |
| LRCC Liaison: | |
| Roger Marshutz | 475-5607 |
| Special Projects: | |
| Rob Sinclair | saa.architects@verizon.net |
| Playgroup Liaison: | |
| Julie Patel | 470-0992 |
| Neighborhood Council Representative: | |
| Pam Cooke | 441-5415 |
| Neighborhood Council Representative: | |
| Robert Ringler | 475-5978 |
| President Emeritus: | |
| Ken Stern | 470 7928 |

The Glenite Staff

Edited by The Pollack PR Marketing Group

Photographs by Roger Marshutz

Graphic Design by Bacall: Creative

Please submit articles or news and notice updates to: amoreno@ppmgcorp.com (electronic versions only please!)

Glenite Deadlines

Winter 2005: Submissions needed by Jan.11, 2005

Spring 2005: Submissions needed by April 11, 2005

Summer 2005: Submissions needed by July 11, 2005

Autumn 2005: Submissions needed by Oct. 11, 2005



Glen residents completing a 7-week CERT training course conducted by the LAFDs Disaster Preparedness Unit.

Emergency Preparedness Corner

By Antoinette Bower, Emergency Preparedness Chair

AKA: COMMON SENSE TIME AND REPETITION-IS-DEFINITELY-A-GOOD-THING-WHEN-IT-COMES-TO-EP!

In this time of thinking carefully about civic duty, and with SAFETY being one of the main concerns, COMMON SENSE/ SELF-PRESERVATION says "EVERYTHING STARTS WITH US" – at home.

This is true whether we're talking about man-made or natural disaster. Obviously, there are things about which we can do little or nothing. But there are many, many things we can do to make a huge difference in our comfort (for want of a better world) and even our survival. We know that our Police and Fire Departments (and to some extent, the National Guard) are stretched to their limit on a normal day, i.e. that's without a major event. It follows that, much as we don't like to think about it, we've got to face reality and know how to be more self-contained. We need to know how to keep going in the best possible way under the circumstances, whatever they might be – large or small – for as long as it takes professional help to arrive.

If we're waiting for a major incident to happen before we get interested – good luck

If we're prepared and nothing happens for the time being – WHOOPEE! We'll have learned stuff that will always be useful in our everyday lives. Win, win!

Speaking of winning, on behalf of all those who took the just-completed 7-week CERT training course in the Glen, we want to thank the LAFDs Disaster Preparedness Unit for their know-how and humor. They can't turn us into professionals in a few hours, but they have given us a

very practical understanding of the importance of team-work, of what to do and often – what not to do – and of how to do the greatest good for the greatest number of people in emergency situations once we've taken care of ourselves and immediate family.

Things to keep in mind

We've covered how to make water safe to drink when supplies are running out. But have you checked lately to see if you have the useful liquid chlorine bleach in the house?

So you've got flashlights and extra batteries, but are you prepared for a longer power outage beyond that – e.g. computers down, etc.?

Do you keep some ready cash on hand for times when ATMs aren't working? And is that cash mostly in small denominations and change, so that you don't get stuck with overpaying when there's no change?

Do you let your gas tank in the car go below the half-way mark?

When summer is over, do we all breathe a sigh of relief because we think we've sneaked through the worst of another fire season? The Fire Dept reminds us that November and December are Santa Ana months, and fire safety is a year-round thing in our neck of the woods. Keep on keeping an eye on brush, on chimney clearance, roof and gutter clearance and all the rest of it.

Last but not least, we do urgently want your comments as well as suggestions for future EP corners. The more we exchange ideas, the better. Thank you so much

You can go to www.cert-la.com for info including CERT training courses currently starting up at other locations.

UCLA's Dr. Robert Y. Foos Death

Dr. Robert Y. Foos, 40-year member of the Department of Pathology and Laboratory Medicine and 30-year Director of the Pathology Laboratory at the Jules Stein Eye Institute, has died. A Professor Emeritus at the UCLA School of Medicine, Dr. Foos succumbed to prostate cancer at the age of 82 at his home in Beverly Glen California.

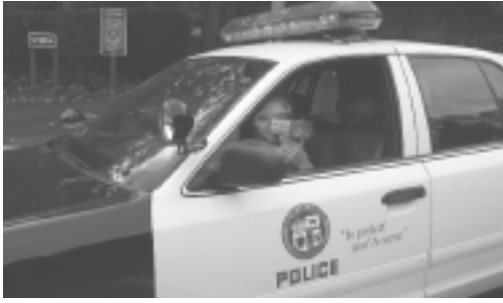
Born in 1922 in Philadelphia Pennsylvania, he enlisted in the US Army 11 months before the December 1941 Pearl Harbor attack and was discharged six years later as a Captain in the Army Air Corps.

After leaving military service he earned a DVM degree at the Davis campus of the University of California, subsequently practicing general veterinary medicine for six years in the California high desert. He then took a MD degree at UCLA, where until retirement in 1993 he was a member of the faculty of the Department of Pathology. Upon completion of his residency he was called upon to fill a vacancy in the ocular pathology program at the Jules Stein Eye Institute, where he served as Director until retirement. Following his retirement he assembled this work into what he labeled as his Magnum opus "System of Ocular Pathology," a two volume atlas-textbook treatise that he described as his 'legacy to Medicine.'

In consideration of his contributions in the field of ophthalmic pathology, he was a frequent Visiting Professor and Guest Lecturer at many national and international institutions. In addition, he received many awards and accolades and was a charter member of the American Association of Ophthalmic Pathologists and a 30-year member of the Verhoeff Ophthalmic Pathology Society.

One would expect that outside his academic hermitage, Dr. Foos' extracurricular activities would be limited. However, he found time for his passion bicycling, notably long-distance touring. Such tours were usually solo and of his planning. They included 43 of the 50 United States, 17 foreign countries, and six continents.

Dr. Foos is survived by Sunny, his wife of 58 years, their four children (and seven grandchildren), and a host of grateful students and colleagues.



Speeding is an ongoing problem in the Glen. Pictured here, five-year veteran, Officer Karandy of the West Los Angeles Patrol Division catches speeders with her radar gun, ticketing over 10 speeders on Beverly Glen Blvd. that afternoon.



Speeders knock down a stop sign at Chrysanthemum Lane and Beverly Glen Blvd.



A Glen resident's nanny is late for work, loses control of her car and crashes down the hill from the Marshutz house on Monday, November 1st at 7:45 a.m.

Bus Cancellation Notice

Bus number 576, a rapid bus transporting a large percentage of the individuals working in Glen homes and other Westside areas is slated to be canceled.

According to Alex Clifford, the head of the 576 project at the Los Angeles Metropolitan Transit Authority, the MTA will be happy to prepare a personalized alternative bus route for anyone who asks.

For more information go to <http://www.mta.net/>

The Traffic Committee met in October with Glen residents and two officers of West LA PD; the meeting focused on three hotspots: the Nicada speedway, the Four Oaks corner, and the 800 block. The officers talked about the limitations on department's ability to stake out the Glen for speeders; nonetheless, we have noticed an increased number of patrolmen citing speeders in recent weeks along the Glen south of Nicada. The officers also noted the futility of residents reporting offending speeders to the Glen website; there is no mechanism in place for the police to follow-up on these sightings and the form on the website is to be removed.

The Traffic Committee is working on two prongs of the traffic problem, speed and volume. To slow down speeders, there are three tools available to all residents of the Glen: the speed read-out trailer, the decoy police car, and a community speed watch program. All three have visible, measurable impact on speeders. Glen resident Adrian Provost recently arranged for the speed read-out trailer to be periodically installed along the stretch of Beverly Glen between Nicada and Four Oaks. Longtime Glen resident Bob Schulenberg agreed to increase the frequency of the decoy police car, particularly at the Four Oaks corner. We also arrange for that car to be parked on the 1600 block with some regularity. Let us know if you would like one or both on your block; we'll help you set it up.

The Community Speed Watch program is a team of volunteers who are trained by the police department to shoot radar and record the license plates, makes, and models of speeding cars. That information is then given to the police, who follow up with sternly worded warning letters delivered to the offenders. It has been shown to have a demonstrable effect on speeders, and we are looking for volunteers interested in reviving this program.

Several other speed-related improvements are under discussion. Residents David and Elaine Vukadinovich have proposed that the community address the high-speed passing problem in the 800 block. Specifically, they recommend that

that stretch of the Glen be re-stripped for no passing (a double yellow line). Traffic committee co-chairs will follow up with the DOT on this suggestion.

Also, many residents have wanted another light added on the Glen, between Beverly Glen Place and Crater Lane. Former traffic chairs Yfat Reiss and Robin Armandpour initiated this discussion with the councilman's office in May 2003; we will follow up on the status of this proposed light and report on it in the next issue of the Glenite.

Lastly, two Glen residents have stepped forward to help us address the longer-term issues of traffic volume on the Glen and future development in the area. Will Wright, who grew up in the area and has now returned, will be working with us to gather, analyze, and disseminate data about existing conditions—how many cars are using the Glen, how long are the delays, etc.—for planning purposes.

Another long-time resident, Karina Combs, has agreed to join the ROBG board as secretary, we are delighted to note. How does this fit with traffic? Karina is incredibly well informed about development, open space, zoning and planning issues and their bearing on life here in the Glen, including traffic. With Karina as the Board's secretary, we hope to see a closer collaboration between the Glen's various subcommittees and the Neighborhood Council. With her help, we hope to create a community e-mail list, so that when issues arise that effect our community—a proposed development that puts more cars on our street, for example—we can contact you quickly and easily, asking directly for your support: writing a letter, firing off an e-mail, or attending a meeting for example. We hope you will find that a quick and easy way to be involved in the community

Need the decoy car or trailer on your block? Want to start a Community Speed Watch team? Want your name included on an action list for the Glen? Let us know. All feedback, comments, and questions are welcome.

Thank you,

Hadley and Peter Arnold

hpastudio@earthlink.net

Beverly Glen Playgroup *Admissions Procedures*

As we begin our new school year, Playgroup and Glen residents thought it would be helpful for the community to have some general information about our educational philosophy, how and when to apply to Playgroup, and what it means to be part of a parent cooperative school.

The Beverly Glen Playgroup is a non-profit parent-cooperative preschool. We endorse a developmental approach to learning. Playgroup believes that children learn by doing. Our focus is on the process of education versus the end product. It is important to recognize the uniqueness of each child and respect his or her individual rate of development. We believe that a child's play is their real work. It is through play that children integrate and understand the world around them.

We recognize that Playgroup was started by Glen residents and therefore we want to give Glen residents priority when deciding our new incoming families. However, we also recognize how hard these Glen families worked at making Playgroup a parent coop. In this day and age, it is difficult to juggle a job and a family in addition to working at Playgroup 2-3 times a month, cleaning the school, driving on monthly field trips, attending monthly meetings, gathering fundraiser donations, etc. The parents at Playgroup, both past and present, have gone the extra mile by participating in a co-op!

Parent cooperation and job flexibility are crucial.

In addition to considering Glen residents and the level of parental involvement and commitment available, Playgroup looks at many factors when reviewing applications. First and foremost, all families applying to Playgroup (Glen and Non Glen) should apply

at least 1-2 years before they want their child to attend Playgroup. It is important to apply as early as possible. All applications must be postmarked by January 1 of each year or they are considered late. Secondly, all families must attend a tour of Playgroup. These tours are offered in October and December of each year. All families that have applied to Playgroup will receive information on upcoming tours. We also post the tour information on the LRCC front door. The gender and age of each child are reviewed so we do not have a class of 13 girls and 3 boys. Playgroup siblings and alumni are given preference if they are either present families or have left the school in good standing. We then interview all the families that have complied with the above qualifications to make sure they understand the high level of parent involvement required by Playgroup. We also want to make sure that a developmental parent co-op is best for both the child and the parents.

Once Playgroup has made its decision regarding the incoming class, we let the families know usually in March or early April by letter. You either receive a letter welcoming you to Playgroup or one that states that you have been placed on the wait list. Families that wish to remain on our wait list must complete a form and mail it back to us. If and when a family leaves Playgroup, we immediately refer to our wait list. We fill openings as and when they arise. We appreciate the support that Glen residents have given Playgroup over the years, and we look forward to a long and rewarding future together.

If you have any additional questions, please call us at 310.470.0992.



The Democratic Club met at the Les River Community Center on Wednesday, August 11th. Greg Heimer started the meeting with a joke, then president Barbara Rapoport turned the meeting over to Pam Cook, a delegate from California, who went to the Democratic convention. Pam showed the photographs she took and spoke enthusiastically about her experience there.

Glen Memories

1963 Beverly Glen Art Fair

Photo take by The Glenite's own Roger Marshutz at one of the first Beverly Glen Art Fairs on June 12, 1963. Roger's daughter and son are on the bike riding on Beverly Glen Place.

SPOTLIGHT ON...

The Stone Canyon Water Quality Improvement Project



The Los Angeles Department of Water and Power (DWP) is building new facilities at the Stone Canyon Reservoir Complex to provide additional treatment for water supplies in response to recent water quality legislation.

The Stone Canyon Reservoir Complex provides water to 400,000 customers in Pacific Palisades, the Santa Monica Mountains, and West Los Angeles. The reservoir complex is actually two reservoirs – an upper and a lower – with related facilities for pumping, chlorinating, and piping reservoir water. The reservoirs are located in the Santa Monica Mountains, 13 miles northwest of downtown Los Angeles.

DWP's objectives in building the Stone Canyon Water Quality Improvement Project are to:

- Comply with drinking water regulations
- Meet water quality objectives to improve the taste, color and odor of the water served from the Stone Canyon Reservoirs
- Maintain an emergency water supply
- Provide a cost-effective and environmentally sound system for treating and distributing water
- Meet community and environmental values in a cost-effective manner

Now Glen residents can take a Community Construction Tour of the Stone Canyon Water Quality Improvement Project. The tour gives community members the opportunity to see the current progress of construction and directly address questions to LADWP and Kiewit. For additional information, tour dates and times log on to <http://www.stonecanyonreservoir.com/home/index.htm>

LRCC DOWN ON ONE KNEE

Be sure to watch your mailbox this November for the Les River Community Center's letter asking Glen residents to continue supporting the LRCC. If you haven't seen it, the annual letter spells out some of the benefits that have been offered to you for over 20 years, such as social events, a voting site, music, lectures, plays and speakers' programs, Town Hall forums, the Residents' Annual Meeting and of course the pre-school, Playgroup. Some communities assess their residents for their community centers, but Beverly Glen asks residents for a donation but once a year. Remember, the LRCC is separate from Residents of Beverly Glen, Inc.



The Voters of Beverly Glen Thank You!!

Hats off to Glen Residents who rallied around the polls to ensure that those who live in the Glen could vote.

Dedicated poll workers included:

Inspector:

Fred Merrill

Clerks:

Margaret Merrill

Nancy Williams

Rhoda Holabird

Velma Twomey

Barbara Rapoport

Dobbie Heimer

Students:


Lindsay Weber

Matt Jacobson

The poll workers were there from at least 6:30 A.M. to 9:00 P.M. and the equipment was set up the night before by several of the workers. The ballots were accounted for after the polls closed and the Inspector drove the ballots and all the equipment to the collection site at the end of a very long day. Many thanks to all the poll workers for their service in making the election possible.

Calif. Coast Carpet Care
 Carpet & Upholstery Cleaning Specialist
 (800) 227-7001 **WANTED**
 OWNER OPERATOR
 Over 30 yrs. Experience
 Reasonable Rates
 100% Guaranteed Work

AKA: The Man in The Hat


NAZILA NEKOORAD
 Piano Instructor
 795 N. Beverly Glen Blvd.
 Los Angeles, CA 90077
 phone 310.614.1597
 email: nekooraad@musician.org

Beverly Glen Realty

A TRADITION IN THE GLEN
SINCE 1911

RICHARD RENALDO PETE CHARLAND SUSAN ARMENTI

1615 N. Beverly Glen Blvd. Phone (310) 474-1013

Formidable
Graphic Design



BACALL: CREATIVE

corporate communications
web design
branding and identity
310 477-4330

A Children's Art Workshop



Where materials are available...
taught by a trained artist, to help your child express,
experience and develop artistic skills and sensitivity...

Renata Zerner 310 474-1621

Private classes for Adults by appointment
Limited enrollment Reasonable rates

Lic. 643694

Commercial
Residential

MICHAEL BARRING
General Contracting

10421 Scenario Lane

LA CA 90077

310 475-2030

Bel-Air

WEDDING CEREMONIES

1604 CRATER LANE • BEL AIR,
CALIFORNIA 90077

ROBERT A. RINGLER & ASSOCIATES
OFFICIATING

(310) 475-5978 • (800) 233-
4888 belairweddings@adelphia.net
www.herecomestheguide.com/belair

PAWS* 818-887-2201

* Plant & Animal Watch Service

Leave them home while you're away.
I'll feed and care for them each day –
Plants, Birds, Fish, Dogs and Cats.
Special Medical needs included.
Glen references provided.



DIANE "DYNAMIC" FISHER

(310) 820-6888 EXT. 3073 BUSINESS
(310) 442-1354 DIRECT LINE
(310) 474-1168 RESIDENCE
(310) 826-8541 FAX



RESIDENTIAL BROKERAGE
11611 SAN VICENTE, LOBBY
LOS ANGELES, CA 90049

INDEPENDENTLY OWNED AND
OPERATED BY NRT INCORPORATED

GARVER'S GARDENS

DESIGN • PLANTING • EXTERIOR CARE

310 890-7648

Michael Garver

Serving Beverly Glen, Bel Air and Holmby Hills
residents since 1980

Residents of Beverly Glen - Membership Application

The Cilenite Autumn 2004

____ Single Family Membership - \$18.00 a year

____ Family Membership - \$25.00 a year

____ Silver Sycamore - \$50.00 donation

____ Golden Oak - \$100.00 donation

*Please make checks payable to "Residents of Beverly Glen, Inc."
and send with this form to 10409 Scenario Lane,
Los Angeles, CA 90077*



Name _____

Address _____

Phone _____

Email _____



**Residents of Beverly Glen, Inc.
Les River Community Center
10409 Scenario Lane
Los Angeles, CA 90077
www.beverlyglen.org**



