

# Sunset Bridge – Intersections Reconstruction

Extended closure of Church Ln at Sunset for 14 days



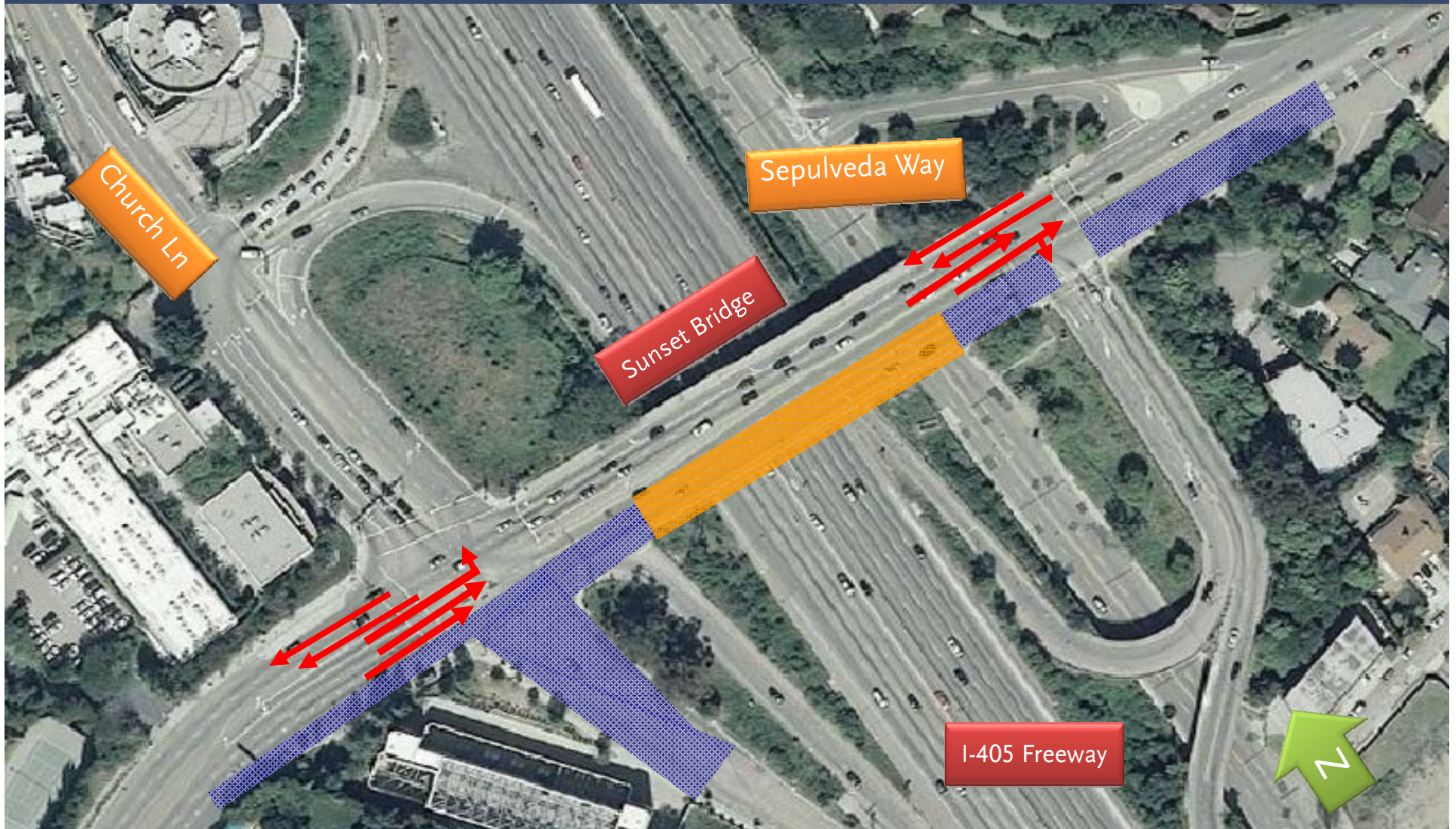
In this view looking southwest, workers finish the rebar support for the bridge deck. The new Sunset Bridge deck will be several feet higher than the current bridge deck.

# Sunset Bridge – Intersections Reconstruction



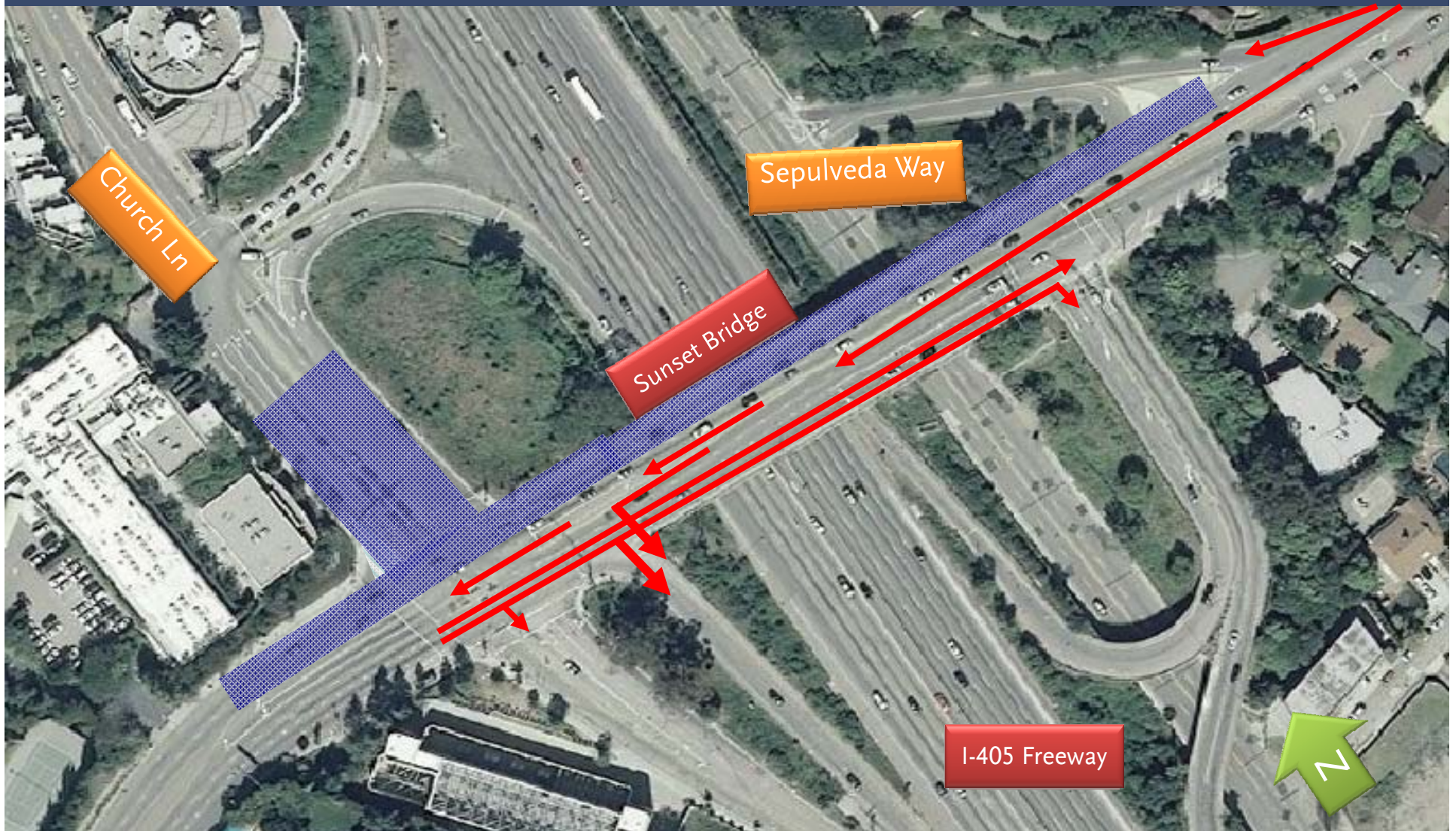
# Sunset Segment – Intersections Reconstruction

Phase I – 14 Day Closure of EB to SB 405 On-Ramp  
September 30 – October 13



# Sunset Bridge – Intersections Reconstruction

Phase II – 14 Day Closure of Church Ln North of Sunset  
October 14 – 29



# Sunset Bridge – North Side Reconstruction

North side demolition and reconstruction

One year configuration



# Sunset Segment- Intersections Reconstruction

Street improvements require an extended duration closures in September

Location	Date	Duration (Days)	Bridge Traffic Configuration
EB Sunset on-ramp to SB 405	September 30, 2011	14	Two lanes in each direction
Intersection of Sunset & N. Church Ln	October 15, 2011	14	One lane in each direction on weekend, then two lanes EB and one lane WB
Intersection of Sunset & Sepulveda Way West	October 15, 2011	14	One lane in each direction on weekend, then two lanes EB and one lane WB

# Sunset Segment—Intersections Reconstruction

## Outreach Plan

- Construction Notice distribution
  - Electronically
  - Door-to-door to immediate area
- Notification to stakeholders and institutions (i.e. hotels, schools, chambers of commerce, bus operators, libraries)
- Community meeting
- Public service announcements
- Social media outreach